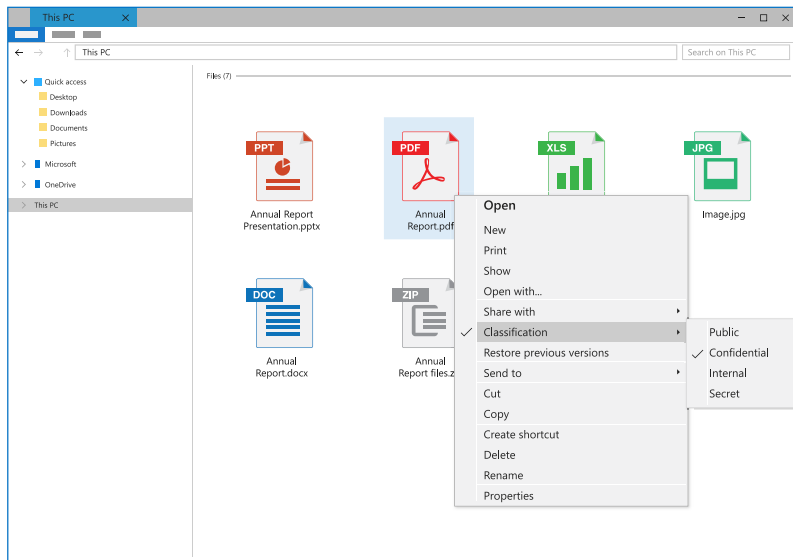


DATASHEET

As the volume of unstructured information grows, the risk of data leakage grows with it. With only a few clicks, users can copy sensitive files from their desktop to email, USB drives, instant messages, and other data leakage points. This increases the risk of serious data leaks, including the disclosure of sensitive information and intellectual property contained in PDFs, videos, images, and design documents.

Titus Classification for Desktop provides the first step in protecting sensitive files from data leakage. By enabling users to assign classifications to any file, Titus Classification for Desktop identifies the value and sensitivity of information so organizations can manage, secure, and share that information. The user's classification selection is stored with the file as persistent metadata, which organizations can use to increase the accuracy and effectiveness of DLP, archiving, and perimeter security solutions.



Classify any file in seconds via a single, easy-to-use dialog

HIGHLIGHTS

Titus Classification for Desktop enables the classification of any file type in a Microsoft Windows® environment. The solution helps organizations:

- Classify files to prevent data loss
- Promote awareness and accountability
- Comply with regulations and policies
- Leverage metadata to enhance downstream solutions
- Automatically trigger VERA protection based on the classification of a file

TRY IT!

Contact us to request a free trial.

SYSTEM REQUIREMENTS

Titus Classification for Desktop supports:

- Windows 7 SP1 (32 & 64 bit)
- Windows 8.1 (64 bit)
- Windows 10
- Windows Server 2008 R2 SP1 (64 bit)
- Windows Server 2012 R2 (64 bit)

The software is client-based and requires no server or additional infrastructure.

Titus Classification for Desktop

KEY FEATURE	BENEFIT
Classify any file	Enables users to classify and protect sensitive information and intellectual property contained in any file, including PDFs, videos, images, ZIP files, and design documents.
Right-click classify	Provides a simple right-click classification menu that guides users when classifying single or multiple files in Windows.
Visual identification	Visually identifies file sensitivity in Windows Explorer via a classification menu and customizable classification icons.
Persistent metadata	Stores the classification selection with the file as persistent metadata that is maintained even when transferring the file through email or to portable media such as USB drives. Classification metadata is also used to increase the accuracy and effectiveness of DLP, archiving, and perimeter security solutions.
Security enablement	Add an extra layer of security by automatically applying Microsoft Rights Management Services® based on the classification.
Ease of administration	Provides a centralized, web-based Administration Console for classification configuration and policy management across the entire Titus Classification Suite of products. Titus generates user activity logs that can be monitored and analyzed to measure the effectiveness of the security policies and detect anomalous usage.



www.titus.com

About HelpSystems

HelpSystems is a people-first software company focused on helping exceptional organizations Build a Better IT™. Our holistic suite of security and automation solutions create a simpler, smarter, and more powerful IT. With customers in over 100 countries and across all industries, organizations everywhere trust HelpSystems to provide peace of mind. Learn more at www.helpsystems.com.

DATASHEET

In today's collaborative work environments, documents are regularly shared among employees, customers, and partners. This presents a challenge to organizations that must protect information assets while promoting information sharing. The critical first step in solving this challenge is to classify documents at the time of creation, allowing the organization to identify the information's value, and manage the data accordingly.

Titus Classification for Microsoft Office is a security and governance solution that ensures all Microsoft Office documents are classified before they can be saved, printed, or sent via email. Labels are fully customizable to meet internal and regulatory marking standards, and can be used to indicate any type of information, such as data sensitivity (Public, Confidential) and department (HR, Finance). Flexible classification options enable user-driven, system-suggested or automatic application of the classification based on the content, author, and other document attributes.

By enabling the classification of documents upon creation, organizations can add structure and context to the vast number of Word, Excel, and PowerPoint documents that are created and shared every day. Titus Classification for Microsoft Office easily integrates into existing IT environments and enhances other infrastructure solutions, providing an excellent ROI and immediate compliance and information protection impact.

HIGHLIGHTS

Titus Classification for Microsoft Office is a security and governance solution that enables organizations to ensure consistent and proper handling of their documents.

This allows organizations to:

- Identify information sensitivity
- Prevent data loss
- Meet compliance needs

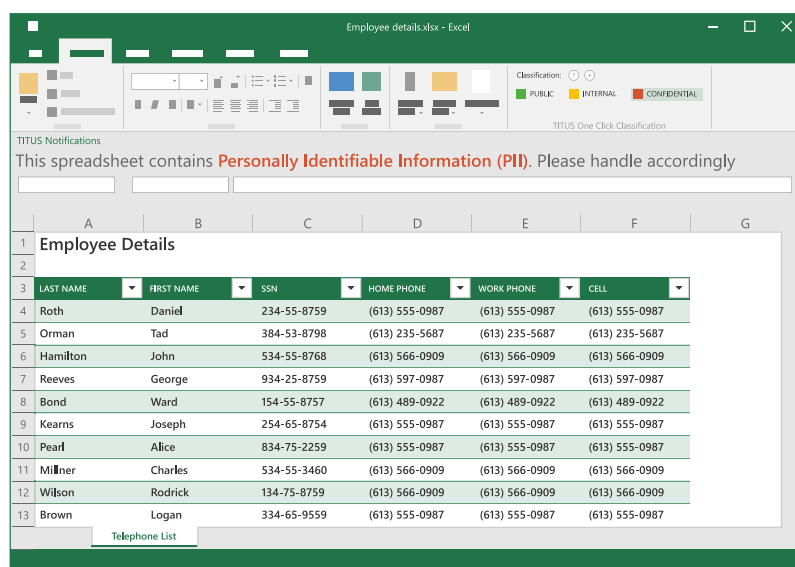
TRY IT!

Contact us to request a free trial.

SYSTEM REQUIREMENTS

Designed for Microsoft Office 2010, 2013, 2016, and 2019 (Word, Excel, PowerPoint).

The software is client-based and requires no server.



Apply visual markings with one click classification

Titus Classification for Microsoft Office.

KEY FEATURE	BENEFIT
Classification Selector	Provides simple, non-intrusive ways to identify the sensitivity of documents with classification labels including: One Click Classification, classification via prompts, system-suggested, and automatic classification based on content, author, and other document attributes.
Visual Markings	Applies visual markings in the form of headers, footers, and watermarks to clearly identify information sensitivity.
Metadata Assist	Stores user classification selections with the document as persistent metadata, which can be used to increase the accuracy and effectiveness of DLP, archiving, and perimeter security solutions.
Policy Enforcement	Enforces policy by comparing multiple properties about the information author, the document, and the action being performed. Provides instant feedback so that the user can immediately correct any problems.
Security Enablement	Add an extra layer of security by automatically applying Microsoft Rights Management Services® based on the classification, content, author and other document attributes.
Administration	Provides a centralized, web-based Administration Console for classification configuration and policy management across the entire Titus Classification Suite of products. Titus generates user activity logs that can be monitored and analyzed to measure the effectiveness of the security policies and detect anomalous usage.



www.titus.com

About HelpSystems

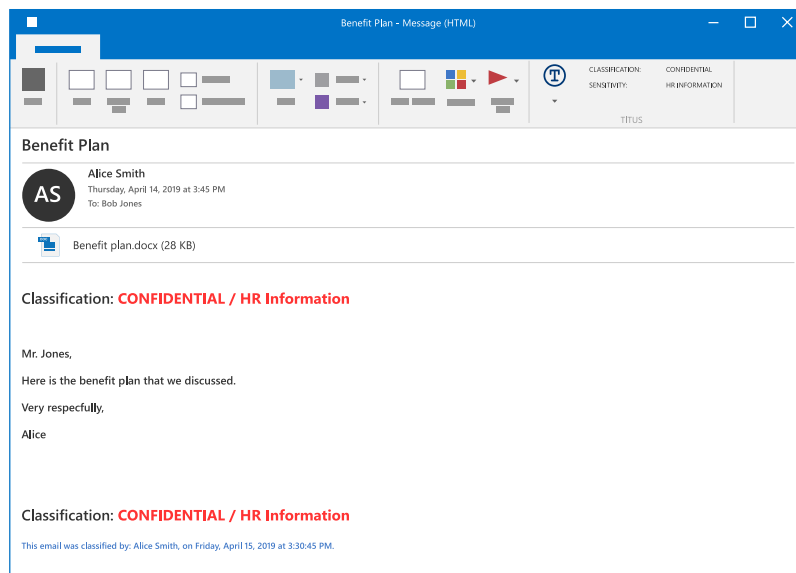
HelpSystems is a people-first software company focused on helping exceptional organizations Build a Better IT™. Our holistic suite of security and automation solutions create a simpler, smarter, and more powerful IT. With customers in over 100 countries and across all industries, organizations everywhere trust HelpSystems to provide peace of mind. Learn more at www.helpsystems.com.

DATASHEET

Whether on the desktop or in the cloud, email continues to be the primary method for sharing information among employees, customers, and partners. This presents a challenge for organizations that must protect information assets while promoting information sharing. The critical first step in solving this challenge is to classify email at the time of creation, allowing organizations to identify the information's value, and manage the data accordingly.

Titus Message Classification is a security and governance solution that ensures that all Microsoft Outlook messages are classified before they are sent. With support for both Windows and Mac, as well as on the desktop and online, Titus provides the broadest email classification coverage available. Flexible classification options enable user-driven, system-suggested or automatic application of the classification based on the recipient, sender, content, and other email attributes. Should an email violate security policies, Titus blocks or warns the user and provides remediation options, preventing potential data breaches.

By assisting users to classify emails upon creation, organizations can add structure to the vast number of emails that are sent every day. This helps to prevent inadvertent disclosure, meet compliance requirements, and enhance infrastructure solutions such as archiving, DLP, and encryption¹.



Protect sensitive information with visual markings and metadata

¹ Available for Outlook for Windows only

HIGHLIGHTS

Titus Message Classification is an easy-to-use, multi-platform email security solution that ensures every Microsoft Outlook email is classified and protectively marked before it is sent. The solution helps organizations:

- Identify information sensitivity
- Prevent data loss
- Meet compliance needs

TRY IT!

Contact us to request a free trial.

SYSTEM REQUIREMENTS

Titus Message Classification Supports:

- Outlook for Windows 2010- 2019
- Outlook for Mac 2016
- Microsoft Exchange 2010-2016
- Outlook on the Web for Exchange Online

Titus Classification for **Microsoft Outlook**

KEY FEATURE	BENEFIT
Classification Selector	Provides simple, non-intrusive ways for users to identify the sensitivity of email with classification labels including: One Click Classification ¹ , classification via prompts, system-suggested, and automatic classification based on recipient, content, and other email attributes.
Visual Markings	Applies visual markings in the email subject line and message body to clearly identify information sensitivity.
Multi-Platform Support	Supports Outlook for both Windows and Mac, as well as Outlook on the desktop and online ensuring the broadest possible coverage across the organization to mitigate risk of data loss.
Metadata Assist	Stores user classification selections with the email as persistent metadata, which can be used to increase the accuracy and effectiveness of DLP, archiving and perimeter security solutions.
Policy Enforcement	Inspects the email for policy violations before the message leaves the desktop, providing instant feedback so that the sender can correct any problems. Rich and flexible policies can be triggered by comparing multiple values, including: email and attachment contents ² , sender and recipient attributes, and classifications or the absence of classification.
Security Enablement	Adds an extra layer of security by automatically encrypting, signing, or RMS-protecting sensitive emails based on classification, recipient, content or any other email attribute ¹ .
Administration	Provides a centralized, web-based Administration Console for classification configuration and policy management across the entire Titus Classification Suite of products. Titus generates user activity logs that can be monitored and analyzed to measure the effectiveness of the security policies and detect anomalous usage.

¹ Available for Outlook for Windows only

² Attachment metadata can be read on all platforms. Attachment content reading is available on Outlook for Windows and Outlook Online only



www.titus.com

About **HelpSystems**

HelpSystems is a people-first software company focused on helping exceptional organizations Build a Better IT™. Our holistic suite of security and automation solutions create a simpler, smarter, and more powerful IT. With customers in over 100 countries and across all industries, organizations everywhere trust HelpSystems to provide peace of mind. Learn more at www.helpsystems.com.